

## Regulatory Signs



No left turn



No U-turn sign



No entry sign



Give Way to bus sign



Stop sign



Slow down and be prepared to stop sign



Tram lane sign



Safety zone sign and Pedestrians crossing sign



Hook Turn sign



Children's crossing flag

## Warning & Advisory signs



Rail crossing ahead sign



T-intersection



Children in the area



Sharp bends



Cross-road intersection



Pedestrians in the area



Roundabout ahead



Slippery when wet sign



Advisory speed sign used with curve warning sign



You may proceed slowly sign

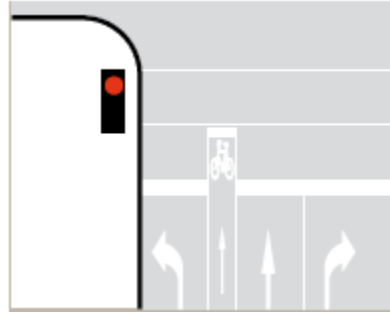


Workers on the road ahead sign

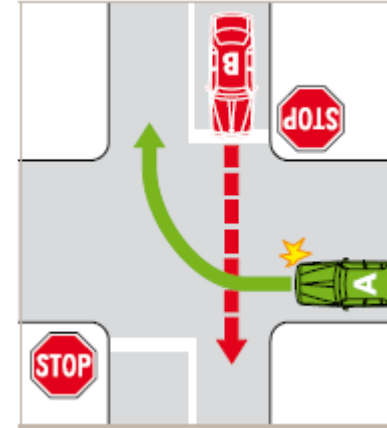
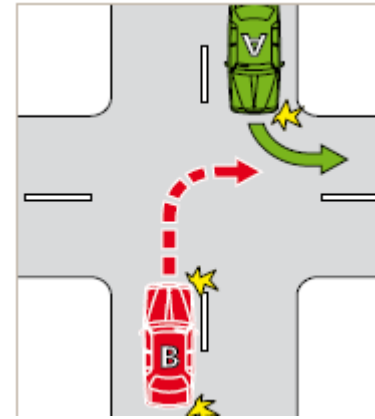
### Direction signs



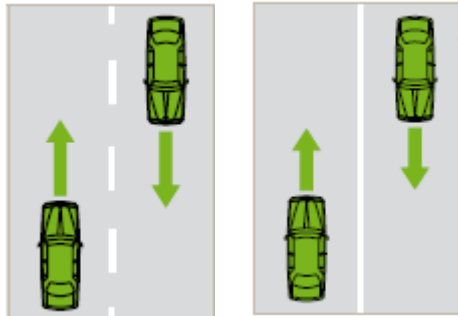
### Road Markings



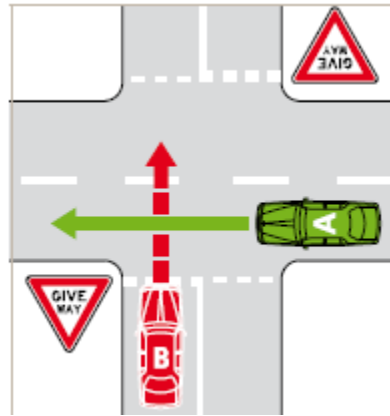
### Road Rules and Responsibilities



### Road Markings

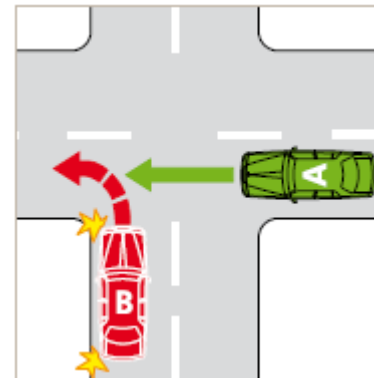


### Road Rules and Responsibilities



### Left turn before right

### Continuing road goes first



### Give way to the right



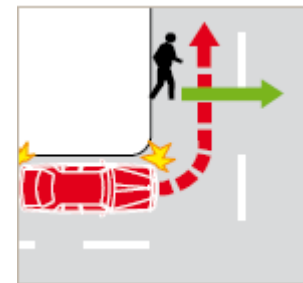
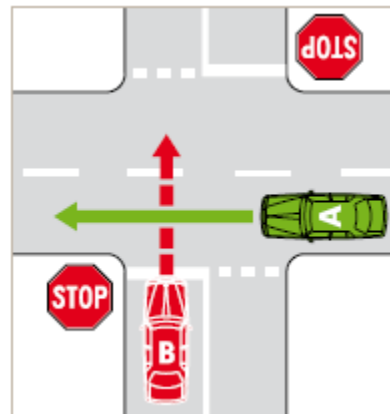
### Slip Lane: Vehicle must give way to pedestrian

### Line Markings

**Broken:** Vehicles can overtake, turn, U turn

**Solid:** Vehicles can turn only, no U turn

**Double Solid:** must not turn, overtake, U turn

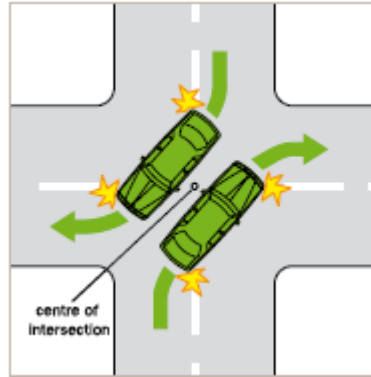


### Turning vehicle must give way

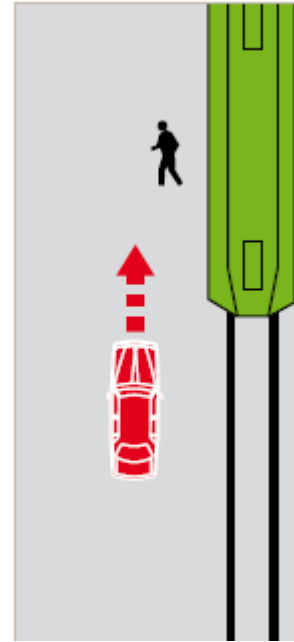
# Road Rules and Responsibilities



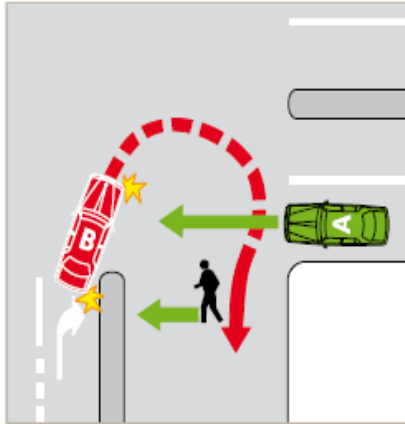
Pedestrian crossing



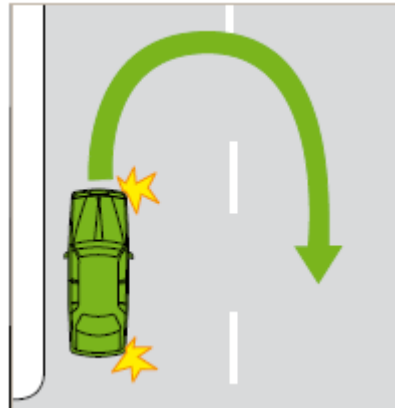
Centre point turning rule



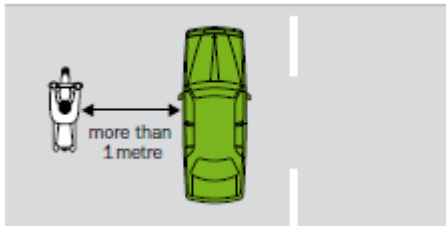
Vehicles must stop before tram at tram stop if there is no safety zone to give way to pedestrians



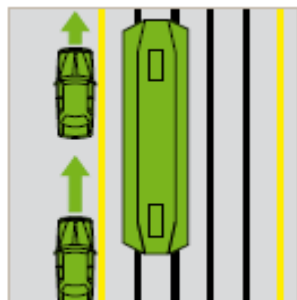
U turn must give way to everyone



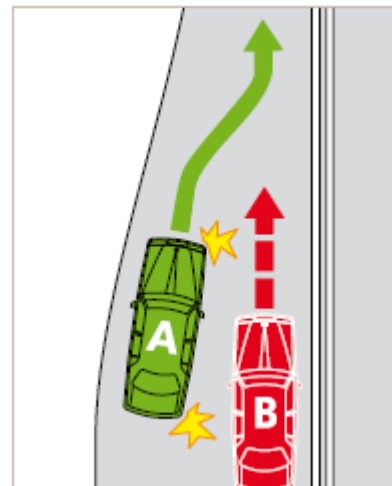
U turn



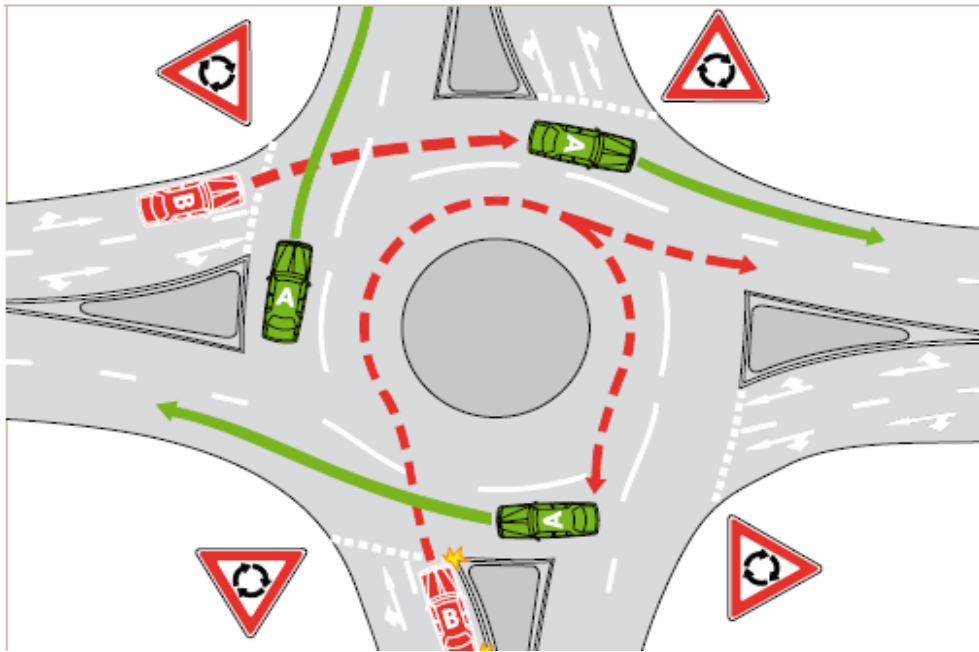
One metre clearance from hazards



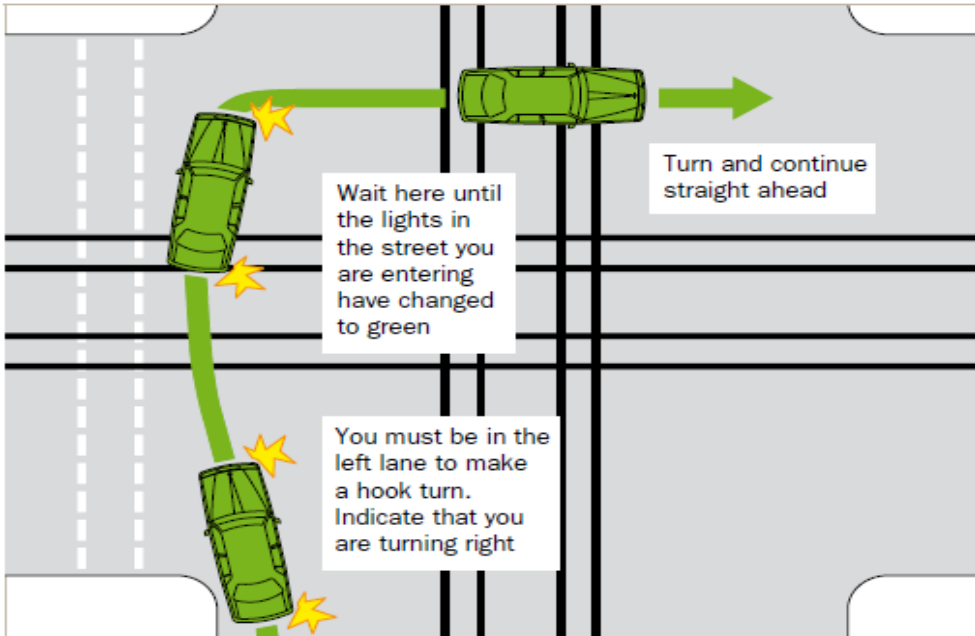
Full time tram line



Zip merging or forming one lane, leading vehicle moves in first



Vehicles outside must give way to vehicles already in roundabout



Hook Turn

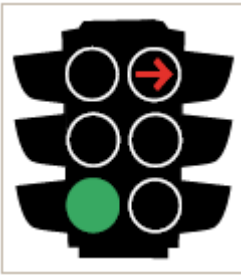
Traffic Lights



Bicycle Light



Tram Light



Directional Arrow



Yellow Light



Pedestrian Light